

# FIRST ANNOUNCEMENT AND CALL FOR PAPERS

(UPDATED: AUGUST, 2010)

## **FIFTH INTERNATIONAL SYMPOSIUM ON GIS/SPATIAL ANALYSES IN FISHERY AND AQUATIC SCIENCES**



**NATIONAL INSTITUTE OF WATER AND ATMOSPHERIC RESEARCH  
(NIWA), WELLINGTON, NEW ZEALAND  
AUGUST 22(MON)-26(FRI), 2011**



**Deadline for the registration and  
submission of abstract is May 30, 2011**

*Please distribute this announcement to your colleagues or friends  
who might be interested in participating in this Symposium.*

# CONTENTS

[BACKGROUNDS]	03-05
[OBJECTIVES]	06
[THEMES]	06-08
[PARTICIPATION]	08
[PRESENTATION OF PAPERS]	08
[SUBJECTS COVERED]	09
[KEYNOTE SPEAKERS & MODERATORS]	10
[LANGUAGE]	10
[AWARDS FOR BEST PRESENTATIONS]	10
[OUTLINE OF THE SYMPOSIUM PROGRAM]	10
[SUBMISSION OF ABSTRACTS]	11
[HELP FOR PUBLICITY OF THE SYMPOSIUM]	12
[PUBLICATION OF PROCEEDINGS(*)]	12
[CALL FOR ADVERTISEMENTS]	13
[EXCURSION]	13
[REGISTRATION]	14
[REGISTRATION FEES]	15-16
[CANCELLATION POLICY]	16
[SCHEDULE (DEADLINES & IMPORTANT DATES)]	17
[CONTACT POINTS ]	17
[ACCOMMODATION (HOTEL RESERVATION)]	17
[MAP OF WELLINGTON AIRPORT, VENUE & HOTELS]	17
[VISA INFORMATION ]	17
[ORGANIZER AND CONVENER]	18
[LOCAL CO-ORGANIZER]	18
[SUPPORTING ORGANIZATION]	19
[SUPPORTING MEMBERS]	20
[FUTURE SYMPOSIA]	21
[PUBLICATIONS]	22

NOTE (1) (\*) *"GIS/SPATIAL ANALYSES IN FISHERY AND AQUATIC SCIENCES (VOLUME 5)"*

(2) *Wellington photographs in this announcement are by courtesy of "Positively Wellington Tourism".*

## **DEAR COLLEAGUES,**

We are pleased to announce the 'Fifth International Symposium on GIS/ Spatial Analyses in Fishery and Aquatic Sciences'. Its general theme is the same as in the past four Symposia, i.e., to emphasize GIS as a tool for conducting spatial analyses in aquatic sciences, which encompasses the ecosystem approach to fisheries management and the interrelationships between inland and marine fisheries and aquaculture, and the aquatic and terrestrial environments in which the activities take place.

### **[BACKGROUNDS]**

Applications of spatial analyses using GIS in fishery and aquatic sciences have lagged behind those used in terrestrial sciences. However, from the last decade of the 20<sup>th</sup> century to the present, GIS has rapidly become a powerful tool for spatial analyses in aquatic environments, as evidenced by the papers presented in the past four Symposia. There have also been local, regional and national GIS workshops and meetings on various topics in fishery and aquatic sciences including: fisheries oceanography, aquaculture, satellite remote sensing, inland fisheries, fisheries management, spatial numerical analyses, etc. However, the opportunity to share experiences in these developments and applications at a global level has been limited.

For this reason, the inaugural 'First International Symposium on GIS in Fishery Science' was held in Seattle, Washington, USA in 1999. It was co-organized by the National Marine Fisheries Service (NMFS) and the 'Fishery GIS Research Group (Saitama, Japan)' (\*) and was quite successful, with 230 presentations (131 orals, 89 posters and 10 GIS software demonstrations).

(\*) *Its name has been changed to 'International Fishery GIS Society' in 2009 to represent more than 6,000 members in the world covering broad subjects in fishery and aquatic sciences.*

The Second Symposium was held at the University of Sussex in Brighton, England, U.K. in 2002, and was co-organized by the International Fishery GIS Society and Dr Geoff Meaden (keynote speaker of the First Symposium), from the Fisheries GIS Unit, Department of Geography, Canterbury Christ Church University, Canterbury, UK. It was also successful, with 96 presentations (67 orals, 23 posters and 6 GIS system related demonstrations).

The Third Symposium took place in Asia at the Shanghai Fisheries University in China in 2005 and it was co-organized by the International Fishery GIS Society and Professor/Dean LiuXiong Xu, Department of Marine Fisheries Sciences and Technologies, Shanghai Fisheries University. It was fruitful with many Asian participants and with 70 presentations (47 orals, 15 posters and 8 GIS system related demonstrations).



*Group photo  
(Second Symposium at the University of Sussex in Brighton, England, U.K. in 2002)*



*Group photo  
(Third Symposium at the Shanghai Fisheries University, China in 2005)*

The Fourth Symposium took place in South America at the Universidade Santa Úrsula in Rio de Janeiro, Brazil with the local co-organizer, Dr Philip Conrad Scott, Instituto de Ciências Biológicas e Ambientais (Institute of Biological and Environmental Sciences). It was very productive especially by many Brazilian participants with total of 99 presentations (71 orals, 16 posters and 12 PC demos, i.e., GIS system related demonstrations).



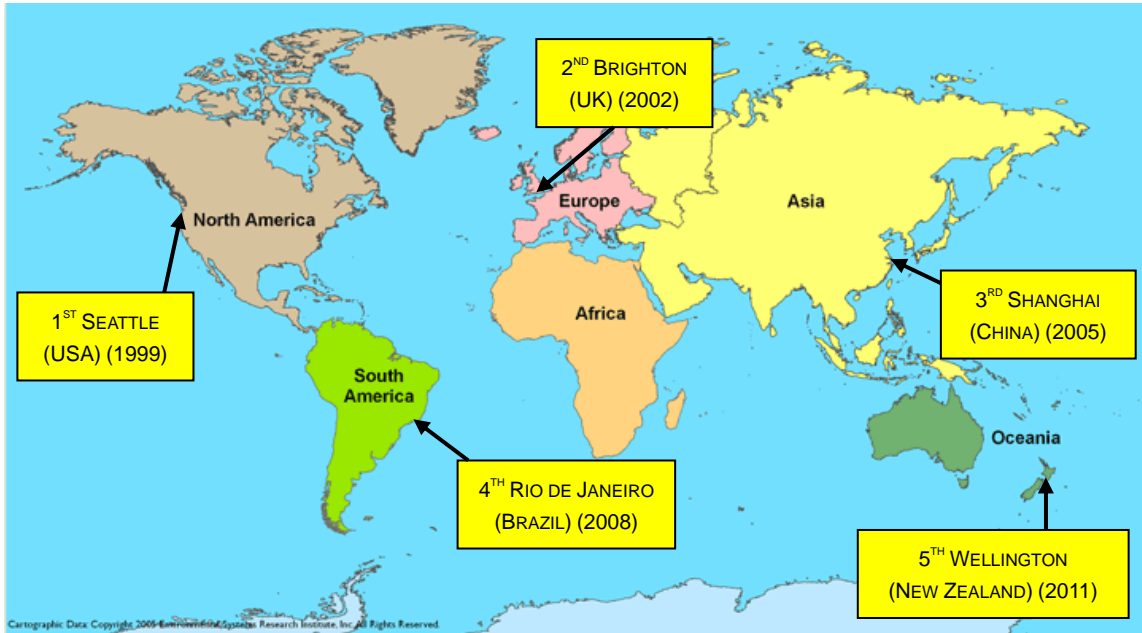
*Group photo*

*(Fourth Symposium at the Universidade Santa Úrsula,  
Rio de Janeiro, Brazil in 2008)*

These four global fishery and aquatic GIS conferences have generated interest world-wide and there has subsequently been strong interest in demonstrating new and further developments. In the three years since the fourth Symposium, it is apparent that there has been significant progress in GIS/spatial analyses in fishery and aquatic sciences. Hence, we encourage your participation in the Fifth Symposium to present new ideas or to share updates on your spatial research using GIS or on other GIS-related issues such as software development, computer hardware, education and reviews.

This is the '**FIRST ANNOUNCEMENT AND CALL FOR PAPERS**' for the 'Fifth International Symposium on GIS/Spatial Analyses in Fishery and Aquatic Sciences'. The 'International Fishery GIS Society' will again be the main organizer and the venue of the Fifth Symposium will be Wellington, New Zealand with the local co-organizers, **Mr Brent Wood** and **Ms Frances Nolan**, National Institute of Water and Atmospheric Research (NIWA) and Silverstripe <http://www.silverstripe.com>.

Locations of venues in the past symposia and the one for the 5<sup>th</sup> symposium are depicted in the map (next page).



*LOCATIONS OF VENUES IN THE PAST SYMPOSIA AND THE NEXT (5<sup>TH</sup>) SYMPOSIUM*

## **[OBJECTIVES]**

The primary objectives of the Fifth Symposium are the same as in the past i.e.,

- *To highlight developments and applications of GIS/Spatial analyses in Fishery and Aquatic Sciences;*
- *To exchange ideas and information; and*
- *To suggest further improvements, techniques and applications of GIS/Spatial analyses in Fishery and Aquatic Sciences.*

## **[THEMES]**

At each Symposium, there has been a single theme in order to highlight and strengthen that area of fishery GIS (see Table 1, page 8). “GIS software” was the major theme of the First Symposium in 1999. GIS was becoming an essential tool for spatial analysis of fisheries data and various GIS software programs were either being developed or adapted for these analyses. The First Symposium provided a forum to showcase these GIS software applications.

Following the First Symposium, we observed the development of basic quantitative spatial analyses using GIS; however, quantitative GIS applications and linkages to stock assessment, resources management, population estimation, geostatistics, forecasting, contour estimation, etc., were not well established or developed. Thus, the theme at the Second Symposium in 2002 was “Spatial Numerical Analyses”.

Three themes were established for the Third Symposium in 2005. The first was “Effective and Affordable GIS for Fishery and Aquatic Information,” especially for the

developing countries. Our intention was to encourage participation by people from developing countries and to demonstrate how GIS could be used by those in these countries.

The second theme was "Spatial Fish Stock Assessment Modeling." At the First Symposium there were several papers on GIS (space) based production models and VPAs under development, which were exciting topics. Indeed there have been many geostatistics-related papers in the past Symposia.

The third theme was "Spatial Fisheries Resource Management." Fisheries managers, not only in the developed countries but also in the developing countries, are gradually adopting GIS-based systems, along with GPS, VMS, satellites, electronic log books, etc., and integrating these into their organizations to manage fisheries resources. As a result this topic was extremely useful for government officials, engineers, GIS system developers, and scientists to help them learn about and exchange information on recent developments and technologies.

In the fourth symposium there were also three themes as follows:

Inland Water and Aquaculture GIS: In the previous three symposia a predominance of marine related presentations, including marine aquaculture was observed. In view of the importance of future food securement from freshwater sources including aquaculture, the Third symposium's final suggestions included the promotion of this area in the Fourth Symposium.

Ecosystem Management: This was 'the' hot topic world-wide in both fisheries and aquaculture. The effective implementation of environmental management using geo-technologies including GIS, Remote Sensing (RS), Global Positioning System (GPS), Vessel Monitoring Systems (VMS) was becoming a reality. FAO has developed an "Ecosystem Approach to Fisheries (EAF)" and currently was working on an "Ecosystem Approach to Aquaculture (EAA)". These and other relevant topics including "Spatial Planning", "Marine Protected Areas (MPA)", "Global Warming", "Biodiversity" and "Spatial Conservation and Management" were discussed in the Symposium.

Future GIS: This broad theme intended to offer symposium participants a chance to look at the current challenges and frontiers in GIS technologies including "Development of 3D and 4D applications", "Web-GIS (multi-user and multi-function information management systems)" and "GIS for all (GIS Education and Capacity Building)" as well as other relevant topics.

Regarding themes in the Fifth Symposium we are now looking for the opinions from the e-mail list members. If you have ideas, please inform the Secretariat of the International Fishery GIS Society by E-mail at [fish-gis@world.odn.ne.jp](mailto:fish-gis@world.odn.ne.jp). We consider that the same themes in the past can be candidates if we want to re-emphasize their importance. To now (August 8, 2010) we received six proposals on themes. For details, please refer to <http://www.esl.co.jp/Sympo/5th/Theme.pdf>. You are still welcome to contribute your proposals by the end of November, 2010. Based on the proposals and discussions by e-mails, we will select a few themes which will be informed to all e-mail members by the end of this year, so that presenters may be able to incorporate selected themes in their presentations.

**Table 1. Themes in the past Symposia**

Symposium	Themes
First Symposium (1999)	GIS Software
Second Symposium (2002)	Spatial Numerical Analyses
Third Symposium (2005)	● Effective and Affordable GIS for Fishery and Aquatic Information (especially for the people in the developing countries)
	● Spatial Fish Stock Assessment Modeling
	● Spatial Fisheries Resource Management
Fourth Symposium (2008)	● Inland Water and Aquaculture GIS
	● Ecosystem Management
	● Future GIS
Fifth Symposium (2011)	<i>For details please refer to the last paragraph in the previous page (page 7)</i>

## [PARTICIPATION]

Participation from a broad audience representing GIS/Spatial analyses in Fishery and Aquatic Sciences is encouraged, i.e., scientists, students, computer experts (developers or engineers), managers (government officials), administrators, educators and others.

## [PRESENTATION OF PAPERS]

For participants who wish to present their work, there are three ways, i.e., by **oral presentation**, **poster presentation** or **PC based demonstration** of GIS software, hardware and related systems. Duration of oral presentations will depend on number of presenters, but we tentatively set them for **20 minutes** (15 minutes for presentation and 5 minutes for questions and answers). For poster presentations and PC demonstrations, particular sessions will be set up. The final duration of oral presentations and details of poster and PC demonstrations will be informed in the final announcement to be circulated by April, 2011.





## **[SUBJECTS COVERED]**

The Symposium will cover spatial analyses using GIS or GIS related topics in Fishery and Aquatic Sciences. Within this there are three main categories:

- [A] Marine related subjects;
- [B] Freshwater, Inland or Brackish-water related subjects; and
- [C] Other subjects.

Each of these three main categories may include a variety of sub-topics as follows:

### **[A] MARINE RELATED SUBJECTS**

- (1) Habitats
- (2) Fisheries
- (3) Fishery Oceanography, Marine Ecosystems or Ecology
- (4) Remote Sensing and/or Acoustic Survey
- (5) Marine Resources Analysis and Management
- (6) Geostatistics, Forecasting and Modelling
- (7) Mariculture
- (8) Artificial Reefs and Marine Protected Areas (MPA's)
- (9) Others (specify for registration)

### **[B] FRESHWATER, INLAND OR BRACKISH-WATER RELATED SUBJECTS (INCLUDING WATERSHED AND ESTUARY)**

- (1) Habitats
- (2) Fisheries
- (3) Estuarine, Lacustrine and Riverine Ecosystems or Ecology
- (4) Remote Sensing and Aquatic Surveys
- (5) Resources Analysis and Management
- (6) Forecasting, Geostatistics or Modelling
- (7) Aquaculture
- (8) Others (specify for registration)

### **[C] OTHERS**

- (1) Theory, Concepts or General Topics
- (2) Demonstration of GIS related Software, Database, Hardware or Systems using Computers
- (3) Education
- (4) Reviews
- (5) Others (specify for registration)

## [KEYNOTE SPEAKERS AND MODERATORS]

Keynote speakers and moderators for each session will be determined and informed later.

## [LANGUAGE]

We use only English for communications, presentations, abstracts, full papers and all the other relevant matters on the Symposium. For presenters, please speak slowly and clearly as more than 50% of the participants were non-native English speakers in the past.

## [AWARDS FOR BEST PRESENTATIONS]

We plan to give awards to the best presentations (orals and posters). Details will be informed in the final announcement to be circulated by April, 2011.

## [OUTLINE OF THE SYMPOSIUM PROGRAM](\*)

**Table 2. Outline of the Fifth symposium schedule.**

August, 2011	Events and Activities	Social events	Registration (**)
22 (Mon)	<ul style="list-style-type: none"> <li>● Openings and key note speeches</li> <li>● Oral presentations (GIS system, concept and education)</li> </ul>	Traditional ice-breaking party	Registration at the reception desk in the
23 (Tue)	<ul style="list-style-type: none"> <li>● Presentations (Major topics will be covered by Orals, Posters and demonstrations of GIS software, system with PCs)</li> </ul>	Group photo	
24 (Wed)		Symposium dinner	
25 (Thu)			
26 (Fri) (morning)	<ul style="list-style-type: none"> <li>● Award ceremony for the best presentations</li> <li>● Sum-up Session (Panel discussion)</li> <li>● Closings</li> </ul>		Secretariat room (8:30-17:00) Daily

### [Note (\*)]

*Those who don't have time to stay for 5 days, it is suggested to attend for 3 days from Aug. 23-25 as major papers will be presented in these 3 days.*

### [Note (\*\*)] Registration at the reception desk

*All the participants (normal, late and walk-in registrants) should FIRST go to the reception desk in the Secretariat room. You will get one envelop including the program, the abstract proceedings, your name card and other information. The walk-in registrants need to register and pay the registration fee. The reception desk will open 8:30-17:00 everyday (Aug 22-26).*

## [SUBMISSION OF ABSTRACTS]

**All presenters MUST submit an abstract by May 30, 2011. Abstracts submitted after this date will not be accepted** due to the strict time constraint for producing the Symposium Program and the Abstract Proceedings. The Guidelines for submission of the abstract are stated in Box 1 (below). An Abstract Proceedings will be prepared and one copy will be provided for each participant at the registration desk in the Symposium. If you are interested in obtaining the Abstract Proceedings from the last four Symposia, please refer to the web site at [http://www.esl.co.jp/Sympo/publication\\_May\\_2010\\_.pdf](http://www.esl.co.jp/Sympo/publication_May_2010_.pdf).

### **BOX 1**

#### **Guideline for Abstract Submission**

##### **(1) Format**

Each abstract will be printed on a sheet of standard A4 paper. The abstract should not exceed 350 words. In the abstract, please include objectives, methods (including the GIS software name if applicable) and results. One color GIS Map or Figure can be also submitted (optional). The example of the abstract format is specified as follows:

##### **(Format of the Abstract)**

(Title) Guidelines for the Symposium on GIS in Fishery Sciences

(Authors) Yoko ONO <sup>1/</sup> and Brent Wood <sup>2/</sup>

1/ Professor, GIS Research Institute, Univ. of Hot Springs, Kyoto,  
424-0091, Japan ([yoko.ono@hot\\_spring.edu.jp](mailto:yoko.ono@hot_spring.edu.jp))

2/ GIS expert, NIWA, Private Bag 14901, Kilbirnie, Wellington,  
New Zealand ([b.wood@niwa.co.nz](mailto:b.wood@niwa.co.nz))

(Key words) List by the alphabetical order, **Maximum 8 key words**

(Text) **Not more than 350 words**

##### **(2) Submission**

Abstracts should be submitted by E-mail to the Secretariat of the International Fishery GIS Society at [fish-gis@world.odn.ne.jp](mailto:fish-gis@world.odn.ne.jp) by May 30, 2011. The file format can be MS-WORD, WordPerfect or plain ASCII text including optional ONE color GIS map or Figure.

## [HELP FOR PUBLICITY OF THIS SYMPOSIUM]

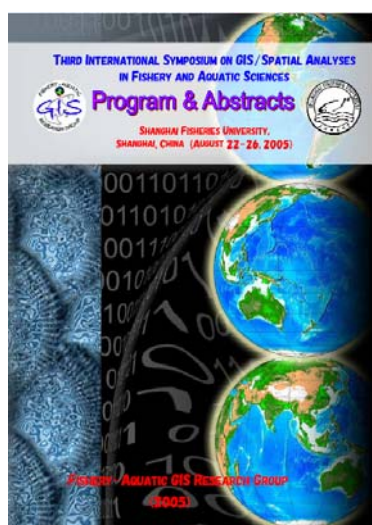
Please help to put this announcement in free listings, e.g. 'Fishing International', 'various GIS publications', etc. and/or to put it in the bulletin boards in research institutions, universities and other relevant outlets. Please also help to distribute this announcement to your colleagues or friends who might be interested in participating in this Symposium. We very much appreciate your kind help and cooperation in this.

## [PUBLICATION OF PROCEEDINGS]

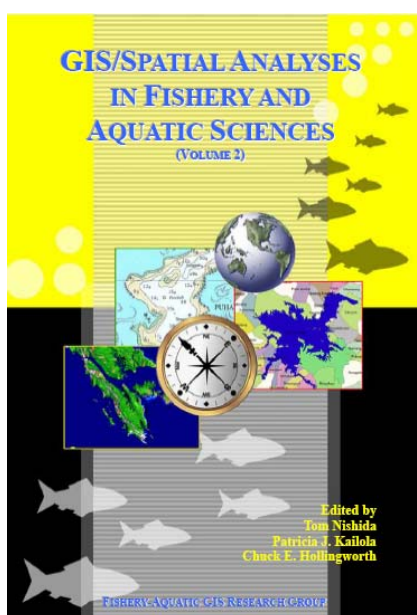
Those who make a presentation (oral, poster or PC demonstration) and who wish to submit a full paper for the Symposium Proceedings, to be published by the International Fishery GIS Society as **“GIS/SPATIAL ANALYSES IN FISHERY AND AQUATIC SCIENCES (VOLUME 5)”**, should send a full paper to the Secretariat of the International Fishery GIS Society at [fish-gis@world.odn.ne.jp](mailto:fish-gis@world.odn.ne.jp) by **September 30, 2011**.

Papers will be peer reviewed by two referees. If the paper is then accepted, it will be checked by professional editors before formal publication. The Proceedings will be published in 2012 or later. **“Guidelines” for the full papers are available at** <http://www.esl.co.jp/Sympo/5th/Guidelines.pdf/>.

If you are interested in the Proceedings of the past Symposia and other publication, please refer to the web site at <http://www.esl.co.jp/Sympo/index.htm>.



ABSTRACT (3<sup>RD</sup> SYMPOSIUM)



PROCEEDINGS (2<sup>ND</sup> SYMPOSIUM)



ABSTRACT (4<sup>TH</sup> SYMPOSIUM)

## [CALL FOR ADVERTISEMENTS]

If GIS related firms such as software and hardware developers are interested in putting their advertisements in our publications and E-mail circulations please contact the Secretariat of the International Fishery GIS Society by E-mail at [fish-gis@world.odn.ne.jp](mailto:fish-gis@world.odn.ne.jp). We will consult details including the design, the cost etc. Please note we have more than 5,000 E-mail members in nearly 50 countries and 10 international organizations.

## [EXCURSION]

No excursions are planned. However, it is easily possible for visitors to book onto excursions through webs and/or local travel agencies.



## [REGISTRATION]

If you wish to participate in the Fifth Symposium, send the following information by E-mail to the Secretariat of the International Fishery GIS Society at [fish-gis@world.odn.ne.jp](mailto:fish-gis@world.odn.ne.jp). **Please make one registration per one person attending.**

- (a) Full name (first, middle and last: LAST NAME IN CAPITAL LETTERS);
- (b) Name of the organization that you belong to;
- (c) Your Post, and Position or Title;
- (d) Postal (mailing) address;
- (e) E-mail address;
- (f) Telephone number including country code;
- (g) FAX number including country code; and

If you intend to present a paper (including poster, exhibition and demonstration using PC or other devices), please also inform us of the following additional information. **(If you are making more than one presentation, please provide information on each separately).**

- (h) Title of your paper;
- (i) Names of the author and co-authors;
- (j) Subject of the paper: Select one from category specified in [SUBJECTS] above, for example, [B]-(3);
- (k) Name of the presenter; and
- (l) Specify the method of presentation, i.e., [Oral], [Poster], or [PC demo] (software/hardware demonstration with PC).

After you send the registration form by E-mail, you will get the registration number from the Secretariat. If you don't get the number in one week, please let us know by E-mail at [fish-gis@world.odn.ne.jp](mailto:fish-gis@world.odn.ne.jp).



## [REGISTRATION FEES]

After you get your registration number, please pay the registration. When you send the registration fee, please indicate your registration number. Table 3 shows the summary of the registration fees.

Table 3. Summary of registration fees

Type	Payment Period	registration fees	Payment Method (See next page for details)
Normal registration fee	By May 30, 2011	US \$ 300	Checks or Credit cards
Late registration fee	After June 1, 2011	US \$ 500	
On-site (walk-in) registration fee	Aug. 22-26, 2011 (during the Symposium)		Checks, credit cards or cash

### [NOTE]

- (1) *Registration fees will be used for administrative expenses, costs of the facilities, the wages of the part time assistants, printing costs for the abstract proceedings, the Symposium Proceedings and other related & necessary expenses.*
- (2) *There are a limited number of the helper jobs during the Symposium such as the time keepers, microphone distributors, coffee-break helpers etc. If you are interested in such, please let us know when you register. Then registration fees will be waived only if you register (by May 30, 2011) and selected. The priority for these positions will be for students and participants from developing countries.*



## **Methods of Payment**

### **(Method A) Checks**

Make a check payable (in US \$) to: 'Fish-GIS' and send it by air mail to:

International Fishery GIS Society  
c/o Environment Simulation Laboratory, 2F, Noble Building  
2-4-1, Arajuku-Cho, Kawagoe-city, Saitama-ken, Japan 350-1124

or

### **(Method B) Credit cards**

Visa, Master Card, American Express or JCB is accepted. Please inform us of your credit card name, its number and expiry date (year/month). For security reasons, please send these information by splitting it into a few separate E-mails to [fish-gis@world.odn.ne.jp](mailto:fish-gis@world.odn.ne.jp) or send by FAX to 81(Japan)-49-241-2442 (international) or 049-241-2442 (within Japan) to the Secretariat of the International Fishery GIS Society.

### **Important notes:**

- (1) For those who have informed of us their CR information in the past, you don't need to send again except if you have new information such as new expiry date and/or a new CR number, etc.
- (2) As Agencies of these credit card companies are based in Japan, they will use Japanese currency for the settlements. This means that you might pay less or vice versa depending upon the exchange rates between two dates, i.e., the date when the credit card agencies pay (settle) with the International Fishery GIS Society and the later date when these agencies charge (settle) with the payee (you)

## **[CANCELLATION POLICY]**

If you wish to cancel your attendance after completing the registration, then you should inform the Secretariat by E-mail. If informed, 50% of the registration fee will be returned.



## [SCHEDULE : DEADLINES AND IMPORTANT DATES ]

Dates	Deadlines and important dates
May 30, 2011	Deadline for the normal registration Deadline for the abstract submission <i>Those who will present papers (including oral, posters and PC demonstration) MUST register and send the registration fee &amp; ABSTRACT by MAY 30, 2011, otherwise, presentations will not be accepted.</i>
June 1-Aug. 26, 2011	Period of late or on-site (walk-in) registration
Aug. 22-26, 2011	5th Symposium
September 30, 2011	Deadline for the full papers for the Proceedings (GIS/Spatial analyses in Fishery and Aquatic Sciences) (Volume 5)
2012 or later	Publication of the Proceedings (GIS/Spatial analyses in Fishery and Aquatic Sciences) (Volume 5)



### [DIRECTION TO THE VENUE & CONTACT POINTS (CUT & KEEP IN YOUR WALLET) ]

The symposium venue is the James Cook Hotel Grand Chancellor in Wellington. The direction to the venue will be informed in the final announcement (to be circulated by April, 2011). The contact points in the Symposium are as below:

**Mr. Brent Wood**

National Institute of Water and Atmospheric Research (NIWA) Ltd  
Private Bag 14901, Kilbirnie, Wellington, New Zealand  
Email: [b.wood@niwa.co.nz](mailto:b.wood@niwa.co.nz)  
Phone :+64 (NZ) (4) 386-0300 (from within NZ: 04 386-0300)  
Fax :+64 (NZ) (4) 386-0574 (from within NZ: 04 386-0574)

**Ms Frances Nolan**

National Institute of Water and Atmospheric Research (NIWA) Ltd  
Private Bag 14901, Kilbirnie, Wellington, New Zealand  
Email: [f.nolan@niwa.co.nz](mailto:f.nolan@niwa.co.nz)  
Phone :+64 (NZ) (4) 386-0527 (from within NZ: 04 386-0527)  
Fax :+64 (NZ) (4) 386-0574 (from within NZ: 04 386-0574)



### [ACCOMMODATION (HOTEL RESERVATION)]

James Cook Hotel Grand Chancellor is the Symposium venue and hotel. The reservation method and other hotel information will be informed in the final announcement to be circulated by April, 2011).

### [MAP OF WELLINGTON, THE AIRPORT, THE VENUE & HOTELS]

To be informed in the final announcement (to be circulated by April, 2011).

### [VISA INFORMATION]

To be informed in the final announcement (to be circulated by April, 2011).

## [ORGANIZER AND CONVENER]

### International Fishery GIS Society

(<http://www.esl.co.jp/Sympo/outline.htm>)

**Dr Kiyoshi Itoh** (Representative) and **Dr Tom Nishida** (Convener)

C/o Environmental Simulation Laboratory (<http://www.esl.co.jp/index.htm/>)

2F, Noble Building, 2-4-1 Arajuku-Cho, Kawagoe, Saitama, Japan 350-1124

E-mail: [fish-gis@world.odn.ne.jp](mailto:fish-gis@world.odn.ne.jp)

Phone : 81(Japan)-(0 for domestic)-49-242-9262

Fax : 81(Japan)-(0 for domestic)-49-241-2442

## [LOCAL CO-ORGANIZER]

### Mr. Brent Wood

National Institute of Water and Atmospheric Research (NIWA) Ltd

Private Bag 14901, Kilbirnie, Wellington, New Zealand

Email: [b.wood@niwa.co.nz](mailto:b.wood@niwa.co.nz)

Phone : +64 (NZ) (4) 386-0300 (from within NZ: 04 386-0300)

Fax : +64 (NZ) (4) 386-0574 (from within NZ: 04 386-0574)

### Ms Frances Nolan

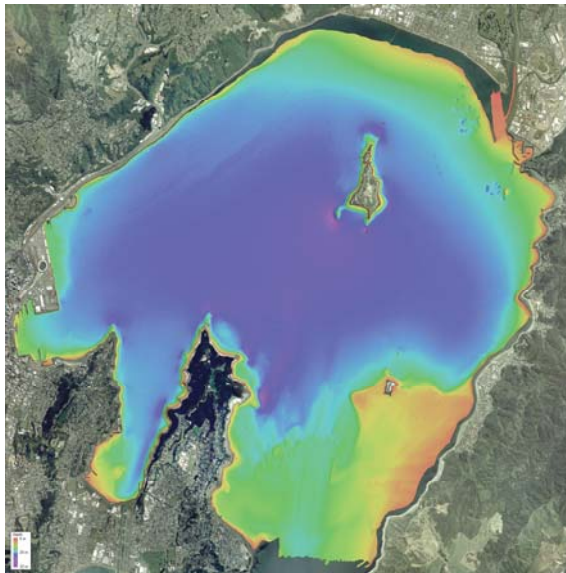
National Institute of Water and Atmospheric Research (NIWA) Ltd

Private Bag 14901, Kilbirnie, Wellington, New Zealand

Email: [f.nolan@niwa.co.nz](mailto:f.nolan@niwa.co.nz)

Phone : +64 (NZ) (4) 386-0527 (from within NZ: 04 386-0527)

Fax : +64 (NZ) (4) 386-0574 (from within NZ: 04 386-0574)



**WELLINGTON HARBOUR**  
**BY THE NIWA'S MULTIBEAM ACOUSTIC SURVEY**  
**(COURTESY OF MR BRENT WOOD, NIWA)**

## [SUPPORTING ORGANIZATION]

### **American Fisheries Society (AFS)**

#### **Bill Fisher (President-Elect)**

U. S. Geological Survey, New York Cooperative Fish and Wildlife Research Unit  
and

Department of Natural Resources, Cornell University, Ithaca, NY 14853, USA

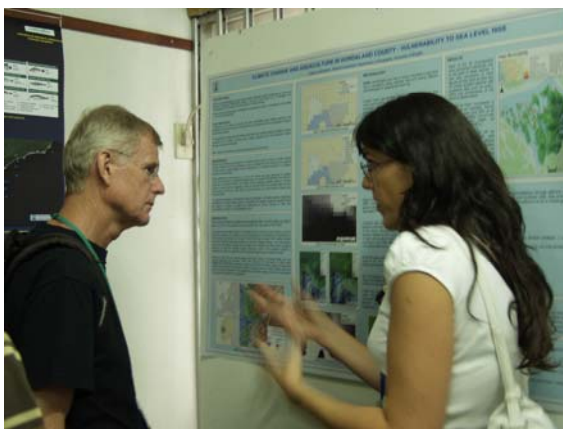
E-mail : [william.fisher@cornell.edu](mailto:william.fisher@cornell.edu)

Phone : 1(USA)-607-255-2839

Fax : 1(USA)-607-255-1895

Homepage : <http://www.fisheries.org/afs/index.html/>

Roles of the supporting organizations are to promote the Symposium by putting the Symposium information on their newsletters, journals and periodical publications.



## [SUPPORTING MEMBERS] (ALPHABETICAL ORDER OF THE LAST NAMES)

### **Dr José Aguilar-Manjarrez**

Fishery Resources Officer, FAO, Via delle Terme di Caracalla, 00153 Rome, Italy  
E-mail : [Jose.AguilarManjarrez@fao.org](mailto:Jose.AguilarManjarrez@fao.org)  
Phone : 39(Italy)-(0 for domestic)-6-570-55452  
Fax : 39(Italy)-(0 for domestic)-6-570-53020  
Home page : <http://www.fao.org/fishery/gisfish>

### **Dr Jarbas Bonetti**

Federal University of Santa Catarina, Campus Universitario, Florianopolis-SC, 88040-900, Brazil  
E-mail : [bonetti@cfh.ufsc.br](mailto:bonetti@cfh.ufsc.br)  
Phone : 55(Brazil)-(0 for domestic)-48-3231-3400  
Fax : 55(Brazil)-(0 for domestic)-48-3231-3434

### **Dr. Din Chen**

Karl E. Peace Endowed Eminent Scholar Chair in Biostatistics  
Professor, Jian-Ping Hsu College of Public Health, Georgia Southern Univ., Statesboro, GA 34060, USA  
E-mail : [dchen@georgiasouthern.edu](mailto:dchen@georgiasouthern.edu)

### **Dr. William L. Fisher**

Unit Leader and Associate Professor  
U. S. Geological Survey, New York Cooperative Fish and Wildlife Research Unit and  
Department of Natural Resources, Cornell University, Ithaca, NY 14853, U.S.A.  
E-mail : [william.fisher@cornell.edu](mailto:william.fisher@cornell.edu)  
Phone : 1(USA)-607-255-2839  
Fax : 1(USA)-607-255-1895  
Homepage : <http://www.dnr.cornell.edu/cals/dnr/research/fwres/index.cfm>

### **Mr Md. Zakir Hossain**

Asian Institute of Technology (AIT), P.O. Box 4, Klong Luang, Pathumthani 12120, THAILAND  
E-mail : [Zakir.Hossain@ait.ac.th](mailto:Zakir.Hossain@ait.ac.th) or [zakirmh@gmail.com](mailto:zakirmh@gmail.com)  
Phone : 66(Thailand)-8-1694-0759

### **Dr Alessandro Gimona**

Macaulay Institute, Craigiebuckler, Aberdeen, Scotland, U.K.  
E-mail : [a.gimona@macaulay.ac.uk](mailto:a.gimona@macaulay.ac.uk)  
Phone : 44(UK)-(0 for domestic)-1224-876544  
Fax : 44(UK)-(0 for domestic)-1224-295511

### **Dr James McDaid Kapetsky (ex-FAO GIS expert)**

C-FAST, Inc. (Consultants in Fisheries and Aquaculture Sciences and Technologies),  
109 Brookhaven Trail, Leland NC U.S.A.  
E-mail : [cfast@sigmaxi.net](mailto:cfast@sigmaxi.net)  
Phone : 1(USA)-910-371-0012

### **Dr Geoff Meaden**

Consultant: "Gorewell", Selling Road, Old Wives Lees, Canterbury, Kent, CT4 8BD, UK  
E-mail : [geoff.meaden@gmail.com](mailto:geoff.meaden@gmail.com)  
Phone : 44 (UK) - (0 for domestic) - 1227 - 752 275

### **Dr Francis Maduwuba NWOSU**

Senior Research Fellow; Institute of Oceanography, University of Calabar, PMB 1115 Calabar, Nigeria  
E-mail : [fmnwosu@yahoo.com](mailto:fmnwosu@yahoo.com)  
Phone : 234(Nigeria)-803-835-5564

### **Dr Graham J. Pierce**

Department of Zoology, University of Aberdeen, Tillydrone Avenue, Aberdeen AB24 2TZ, Scotland, U.K.  
E-mail : [g.j.pierce@abdn.ac.uk](mailto:g.j.pierce@abdn.ac.uk)  
Phone : 44(UK) -(0 for domestic)-1224-272459  
Fax : 44(UK) -(0 for domestic)-1224-272396

### **Dr Naoki Tojo**

Staff of Marino-Forum 21 (MF21)  
Yusen-Okachimachi Bldg. 8F, 4-8-7, Taito, Taito-ku, Tokyo, 110-0016, JAPAN  
E-mail : [bering.raven@gmail.com](mailto:bering.raven@gmail.com)  
Phone : 81(Japan)-3-3837-5214  
FAX : 81(Japan)-3-5817-3870

### **Mr Vasilis D. Valavanis**

Marine GIS Laboratory (MGIS) PO BOX 2214, 71003, Iraklio, Crete, Greece  
E-mail : [vasilis@her.hcmr.gr](mailto:vasilis@her.hcmr.gr)  
Phone : 30(Greece)-2810-337817  
Fax : 30(Greece)-2810-337822  
Homepage (M-GIS) : <http://arch.her.hcmr.gr/>

*Other voluntary supporting members are welcome. Please contact the Convener.*

Roles of the supporting members are to promote the Symposium, to assist preparation of the Symposium, to assist various matters during the Symposium and other related matters.

## [FUTURE SYMPOSIA]

The International Fishery GIS Society organizes this type of Symposium every three years. The Fifth Symposium will therefore be held in 2014 and the venue will be determined in 2013.

## [PREVIOUS PUBLICATIONS]

Abstract Proceedings and Proceedings of the past Symposia (GIS/Spatial analyses in Fishery and Aquatic Sciences Volumes 1-4) are available. For details, refer to the web site: [http://www.esl.co.jp/Sympo/publication\\_May\\_2010\\_.pdf/](http://www.esl.co.jp/Sympo/publication_May_2010_.pdf/) or next page.



## PUBLICATIONS FOR SALE (AUGUST, 2010)

[For any purchase the cost of Surface/Sea mail & handling fees is included] (\*)

- For the contents of Abstracts and Proceedings, please refer to <http://www.esl.co.jp/Sympo/cofpast/index.htm>.
- For book (Proceedings) reviews, please refer to <http://www.esl.co.jp/Sympo/bookrev/index.htm>

Symposium	code	Contents	Purchases by individuals (US\$)	Purchases by Library, Agency or Company (US\$)
First Symposium (NMFS, Seattle, USA, 1999)	(A)	Abstract Proceedings (132 papers)	30	40
	(B)	PROCEEDINGS (40 original articles) [GIS/Spatial analyses in Fishery and Aquatic Sciences (Vol. 1)]	80	100
	(C)	Package (special offer) [ (A) + (B) ]	90	110
	(C-DVD)	(C) all in DVD	60	80
	(D)	Individual reprints from (B)	2	4
Second Symposium (University of Sussex, Brighton, UK, 2002)	(E)	Abstract Proceedings (95 papers)	30	40
	(F)	PROCEEDINGS (46 original articles) [GIS/Spatial analyses in Fishery and Aquatic Sciences (Vol. 2)]	80	100
	(G)	PowerPoint files(61 papers) (one) CD-ROM	20	30
	(H)	572 digital symposium pictures (one) CD-ROM	20	30
	(I)	Package (special offer) [ all items:(E) + (F) + (G) + (H) ]	120	150
	(I-DVD)	(I) all in DVD	140	170
	(J)	Package (special offer) [ (F) + (G) + (H) ]	100	130
	(K)	Package(special offer) [ (E) + (F) ]	90	110
Third Symposium (Shanghai Fisheries University, China, 2005)	(L)	Individual reprints from (F)	2	4
	(M)	Abstract Proceedings (72 papers)	30	40
	(M2)	PROCEEDINGS (28 original articles) [GIS/Spatial analyses in Fishery and Aquatic Sciences (Vol. 3)]	80	100
	(N)	PowerPoint files(49 papers) (one) CD-ROM	20	30
	(O)	1,228 digital symposium pictures (two) CD-ROMs	20	30
	(P)	Package (special offer) [ (M)+(N) + (O) ]	50	70
	(Q)	Package (special offer) [ (N) + (O) ]	30	50
	(Q2)	Package (special offer) [ all items: (M) +(M2)+ (N)+(O) ]	120	150
	(Q2-DVD)	(Q2) all in DVD	140	170
Fourth Symposium (Universidade Santa Úrsula Rio de Janeiro, Brazil, 2008)	(Q3)	Package (special offer) [ (M) +(M2) ]	90	110
	(Q4)	Individual reprints from (M2)	2	4
	(S1)	Abstract Proceedings (95 papers)	30	40
	(S2)	PROCEEDINGS(35 articles) [GIS/Spatial analyses in Fishery and Aquatic Sciences (Vol. 4)]	80	100
	(S3)	PowerPoint files(83 papers) (one) CD-ROM	20	30
	(S4)	627 Digital symposium pictures (one) DVD	20	30
	(S5)	Package (special offer) [ (S1)+ (S3) + (S4) ]	50	70
	(S6)	Package (special offer) [ (S3) + (S4) ]	30	50
	(S7)	Package (special offer) [ all items: (S1) +(S2)+ (S3)+(S4) ]	120	150
(S7-DVD)	(S7) all in DVD	140	170	
Special issue (2005)	(S8)	Package (special offer) [ (S1) +(S2) ]	90	110
	(S9)	Individual reprints from (S2)	2	4
	(R)	Application of GIS and Remote Sensing Technologies in Inland Fisheries Management and Planning in Asia	30	40

- (\*) For air mail (including the handling fee): add US\$ 30 for any amount the purchases.
- For surface/sea mail, it will take for 1-3 months to deliver & 1-2 weeks by air mail depending on the destination and the situations.

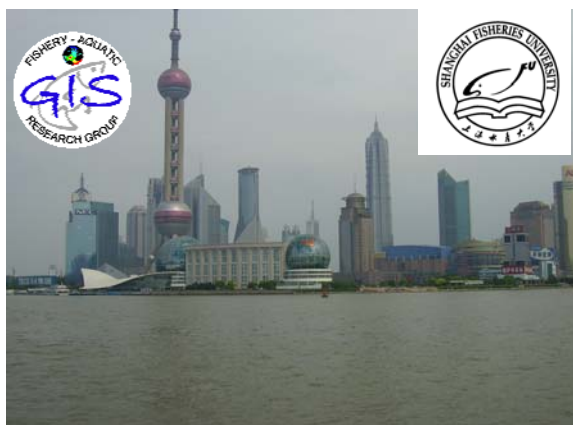
**Methods of Payment: please follow the instruction stated on page 16.**



**1<sup>ST</sup> SYMPOSIUM** (MARCH 2-4, 1999)  
 VENUE: DOUBLE TREE HOTEL (SEATTLE/TACOMA AIRPORT)  
 SEATTLE, WASHINGTON, USA  
 CO-ORGANIZER: DR LOH-LEE LOW  
 NATIONAL MARINE FISHERIES SERVICE (NMFS), NOAA



**2<sup>ND</sup> SYMPOSIUM** (SEPTEMBER 3-6, 2002)  
 VENUE: UNIVERSITY OF SUSSEX  
 BRIGHTON, UK  
 CO-ORGANIZER: DR GEOFF MEADEN  
 CANTERBURY CHRIST CHURCH UNIVERSITY



**3<sup>RD</sup> SYMPOSIUM** (AUGUST 22-26, 2005)  
 VENUE: SHANGHAI FISHERIES UNIVERSITY  
 SHANGHAI, CHINA  
 CO-ORGANIZER: PROFESSOR LIU-XIONG XU (許柳雄 教授)



**4<sup>TH</sup> SYMPOSIUM** (AUGUST 25-29, 2008)  
 VENUE: Universidade Santa Úrsula  
 RIO DE JANEIRO, BRAZIL  
 CO-ORGANIZER: DR PHILIP SCOTT



**5<sup>TH</sup> SYMPOSIUM** (AUGUST 22-26, 2011)  
 VENUE: JAMES COOK HOTEL GRAND CHANCELLOR  
 CO-ORGANIZER: MR BRENT WOOD AND MS FRANCES NOLAN  
 NATIONAL INSTITUTE OF WATER AND ATMOSPHERIC RESEARCH  
 (NIWA) AND SILVERSTRIPE.